



# Place of Death of Patients in a Newly Established Home Palliative Care Service in Greece

S. Katsaragakis, A. Tserkezoglou, S. Amoiridou, E. Avgetidou, I. Liakopoulos, O. Mpagiaou, H. Oikonomou, E. Petta, H. Raimondou, S. Tsoதாக, A. Hamou, E. Patiraki  
 Holy Metropolis of Mesogaia & Lavriotiki, Palliative Care Unit Galilee, Athens, Greece

**Introduction:** 'Galilee' palliative care service has been providing home care for adult cancer patients, in a large suburban area of Athens since 2010.

**Objectives:** Explore factors associated with the patients' place of death and length of care.

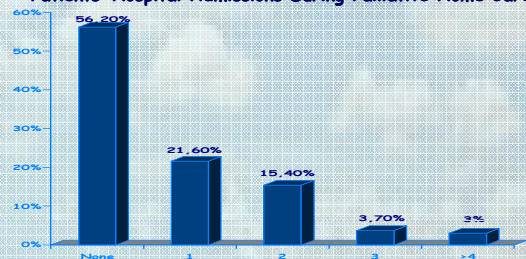
**Methods:** Sample consisted of 162 cancer patients receiving home palliative care. Retrospective data collection included: demographic and clinical characteristics, ECOG performance status (0-4), and patients' ESAS-r (Edmond Symptom Assessment System Revised) evaluation of symptoms (Likert type 1-10 scale) at the time of referral to the service (T0), 1 (T1) and 2 months later (T2).

Patients' Demographics & Care Data	
	Frequency (N=162) / Percentage (%)
<b>Sex</b>	
Female	86 / 53.1
Male	67 / 46.9
<b>Age (mean ± SD) (range) (years)</b>	67.1±12.6 (28-93)
<b>ECOG (mean ± SD)</b>	2.7±1.2
ECOG 3-4	99 / 61.1
ECOG 2	24 / 14.8
ECOG 0-1	33 / 20.3
<b>Length of Palliative Home Care (median) (range) (days)</b>	54.5 (0-965)
<b>Number of home visits (median) (range)</b>	12.0 (1-240)
<b>Patients' Primary Caregiver</b>	
Husband/ Wife	56 / 34.6
Child	34 / 21.0
Family member	27 / 16.7
Mother	9 / 5.6
No Caregiver	7 / 4.3
Friends	6 / 3.7
Social Network	4 / 2.5
Other	19 / 11.7

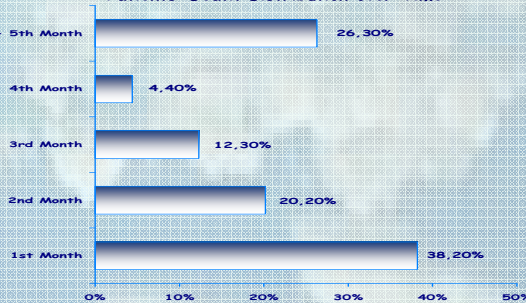
SD Standard Deviation

Disease Characteristics	
Cancer Diagnosis	Frequency (N=162) / Percentage (%)
Lung	30 / 18.5
Breast	28 / 17.3
Gastrointestinal	28 / 17.3
Urinary	26 / 16.0
Genital	21 / 13.0
Head-Neck	6 / 3.7
Skin	6 / 3.7
Brain	4 / 2.5
Unknown Primary	3 / 1.9
Sarcoma	2 / 1.2
Other	8 / 4.9
<b>No Antineoplastic Treatment</b>	76 / 46.9
Chemotherapy	31 / 19.1
Radiotherapy	19 / 11.7
Chemotherapy - Radiotherapy	18 / 11.1
Surgery	11 / 6.8
Other	6 / 3.7

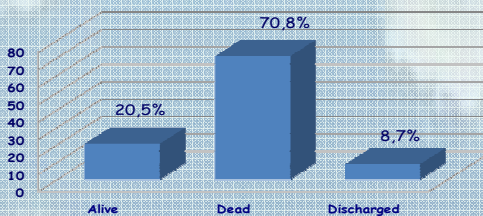
Patients' Hospital Admissions During Palliative Home Care



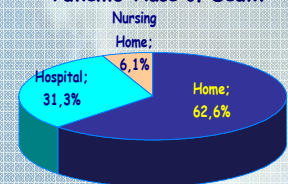
Patients' Death Distribution over Time



Patients' Outcomes



Patients' Place of Death



A family member primary caregiver ( $\chi^2(12)=36.1, p=0.003$ ) and the lack of any antineoplastic treatment ( $\chi^2(10)=18.6, p=0.046$ ) were associated with patients' death at home. High performance status ( $\rho=-0.55, p<0.001$ ) and female sex ( $z=-2.1, p=0.034$ ) were associated with longer length of home palliative care.

**Conclusions:** Study results highlight that regardless of late referral of patients to the service, a great number of patients were supported to die at home.